

Old Dan Tucker

B&E, p. 77; Hart, p. 19, 41

The image displays a musical score for the piece 'Old Dan Tucker'. It is organized into two main systems. The first system consists of three staves of music in 2/4 time, featuring a complex, rhythmic melody with many sixteenth and thirty-second notes. The second system consists of four staves in a key signature of one sharp (F#) and a 2/4 time signature. The first staff of this system begins with a triplet of eighth notes. The second and third staves continue the melody with eighth and quarter notes. The fourth staff concludes the piece with a first ending (marked '1') and a second ending (marked '2').

Oyster River Hornpipe

E. KENDALL



Oyster River is also found in Robbins' 1811 book.

Oyster River Hornpipe

*To E. Echarot, Fifer North Bend, Neb. Co. C. 69th O.V.I.*



Some fifers change keys in the second strain.



RED, WHITE AND BLUE.

Keach

Musical score for 'Red, White and Blue' by Keach. The score consists of three staves of music in G major (one sharp) and 2/4 time. The first staff begins with the instruction 'PIPE.' The music is a simple, rhythmic melody with a mix of eighth and sixteenth notes.

Rosebud Reel (Connecticut Halftime)

Hart

Complex musical score for 'Rosebud Reel (Connecticut Halftime)' by Hart. The score is written for a pipe and includes intricate notation with many slurs and accents. It features several measures of music with dance steps indicated by letters (R, L) and numbers (15, 25) below the notes. The score is divided into sections, with some measures marked 'S.P.' (Soft Pedal) and 'D.P. No. 2' (Drop Pedal No. 2). The notation is dense and detailed, typical of a pipe score for a specific dance.

Rory O'More

Howe



Howe's *School for the Fife*, 1851

YANKEE DOODLE.

Musical score for 'Yankee Doodle' in 2/4 time, key of D major. The score consists of two systems. The first system has a Fife part on a single staff and a Drum part on a single staff. The Fife part begins with a repeat sign and a fermata. The Drum part includes a '7 DRUM.' marking and a '16' marking with a wavy line. The second system also has a Fife part and a Drum part. The Fife part ends with a repeat sign and a fermata. The Drum part includes 'T' markings and '16' markings with wavy lines. The piece concludes with a 'D.C.' (Da Capo) instruction.

STAR SPANGLED BANNER.

Musical score for 'Star Spangled Banner' in 3/4 time, key of D major. The score consists of two systems. The first system has a Fife part on a single staff and a Drum part on a single staff. The Fife part begins with a repeat sign and a fermata. The Drum part includes a 'DRUM.' marking and '9' markings with wavy lines. The second system continues the Fife and Drum parts, with the Fife part ending with a repeat sign and a fermata. The Drum part includes '9' markings with wavy lines.

Modern Drum School.

STAR SPANGLED BANNER. Concluded.

WASHINGTON'S MARCH.

Hart

R R L L L R R R L L

Musical notation for the piece 'Hart' by Hart. It consists of three staves of music in treble clef, 2/4 time. The first staff includes a rhythmic pattern 'R R L L L R R R L L' above the notes. The music features a series of eighth and sixteenth notes with some triplet markings.

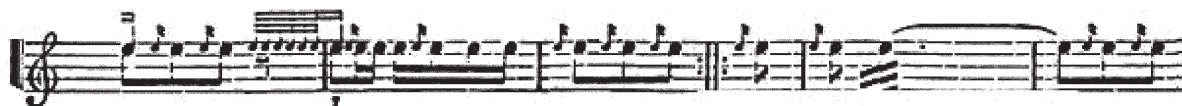
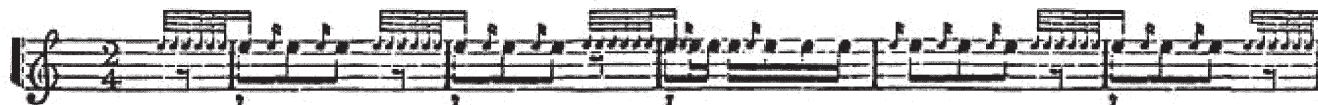
No. 11. ST. PATRICK'S DAY IN THE MORNING.

Nevin

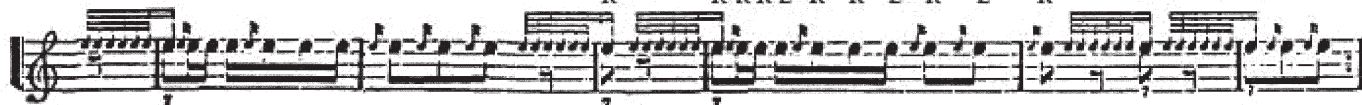
Musical notation for the piece 'St. Patrick's Day in the Morning' by Nevin. It consists of two staves of music in treble clef, 2/4 time. The first staff begins with a 'C' time signature and a 'C' dynamic marking. The second staff ends with a 'C' dynamic marking and a double bar line.

RRRL R R L R L R

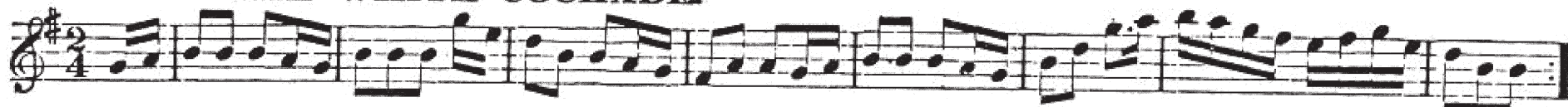
Hart



R RRRL R R L R L R



### THE WHITE COCKADE.





Hart



**No. 51.—YANKEY DOODLE.**



# LARRY O'GAFF.

Hart

DRUM.

The drum notation consists of two staves. The first staff is in 6/8 time and features a series of rhythmic patterns, including eighth and sixteenth notes, with some notes beamed together. The second staff continues the rhythmic pattern with similar note values and rests.

AVF

The musical notation is arranged in four staves, all in treble clef and 6/8 time. The first staff begins with a key signature of one sharp (F#) and a 6/8 time signature. It contains a melodic line with a triplet of eighth notes. The second staff continues the melody. The third and fourth staves provide accompaniment with rhythmic patterns of eighth and sixteenth notes.